

ANYWHERE

Exit Game [Alt]+[X]
 Save Game [Alt]+[S]
 Load Game [Alt]+[L]
 Pause Game [P]
 Set Game Speed 1...0
 Skip Movie Seq. [Esc]
 Return to Prev. Scr. [Esc] or Leave

STARTUP MENU

Start New Game
 Load Saved Game
 Quit to DOS

GENERAL OPTIONS MENU

[Tab] or R-click

Bridge
 Space Map
 Colony Manager
 Vehicle Manager
 Technology Manager
 Personal Data Assistant
 Pause
 Game Options
 Exit Alien Legacy

BRIDGE



General Options Menu
 [Tab] or R-click

Select Advisor
 [Space] or L/R Arrow Key

Answer Comm. Panel
 Click Active Button

Space Map Upper Center
 View Solar System

Science/Tech Mgr. Lower Lf

Navigation/Vcl Manager Mid Lf

Military Advisor Upper Rf

Calypso Clny Grid Upper Rt
 View ship resources

Engineering/Clny Mgr. Mid Rt

Computer/PDA/Game Settings
 Lower Rt

SPACE MAP



General Options Menu
 [Tab] or R-click in view
 Planet Mercator

Double-click planet
 Game Speed Up/Dn Slider

Stop time Click STOP
 Move point of view
 Click arrow
 Max: R-click

Zoom In Click in-arrows
 Max: R-click in-arrows

Zoom Out Click out-arrows
 Max: R-click out-arrows

Foreground View
 Click planet sidebar

Anchor View
 R-click planet sidebar

Planet Menu R-click planet
 Colonies: View colonies on or orbiting
 Vehicles: View ships on or orbiting
 Follow: View follows planet's orbit
 Anchor: View centered on planet
 View: Planet Mercator

MERCATOR MAP



General Options Menu
 [Tab] or R-click
 vacant sector

Select Sector
 Click Sector Arrows
 or use Arrow Keys

Colony Options
 R-click Colony

With Ship

Explore Sector
 Click ship

Vehicle Menu
 R-click ship

Scan for Ore
 Ore icon

Scan for Energy
 Energy icon

Other scanner(s) as developed

EXPLORE SECTOR



Direction
 Compass

Collect item
 Click Hand cursor

Fire Laser
 R-click Target cursor

Cargo Limit
 Load: On Board/Max.

Fuel Units left
 (1,000 fuel = 1 energy)

Return to Orbit
 Leave

Overhead View On/Off
 Large ship

Scan
 Small ship

Plasma Bomb
 Fireball

Cargo View
 Compass icon

Sector Map View
 Cargo Bay icon

Move Ship
 Arrows

TECHNOLOGY MGR.



View Inventions
 [Space] or L/R Arrow Key

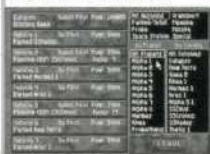
Invent Current
 Click Invent

Research Needed
 Upper row of numbers

Astronomy
 Chemistry
 Electronics
 Geology
 Biology
 Mathematics
 Physics

Research Available
 Lower row of numbers

VEHICLE MGR.



Filter Vehicle List
 By Mission, Planet, Colony

Select Vehicle
 Click on vehicle listing

See more Vehicles
 Click Up/Down arrows



Vehicle Hangar

Select Mission
 Select from Mission Menu

Trips To/From:
 Select Pipeline Mission

Select Destination
 Select from Dest. Menu

Select Pilot
 Select from Pilot Menu

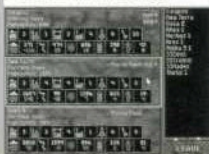
Load Item
 Click to increase
 R-click to decrease
 (Ore, Energy, Life Support, Humans, Robots)

Select Different Vehicle
 Click Vehicle button

Launch Ship Now
 Click Launch

Cancel Mission
 Click Leave

COLONY MGR.



Colony Summary
 Click Colony Name to bring
 Summary to top of list
 (Habitat, Factories, Power,
 Labs, Ships, Missiles, Ore,
 Energy, Life Support,
 Humans, Robots)

See More Colony Summaries
 Click Arrows
 or Up/Dn Arrow Keys

Visit Site Grid
 Click Colony Summary

Special Installations, Advisors
 stationed at colony
 Right side of Summary



Colony Grid Controls

Options Menu
 R-click empty area

Move Grid View
 Numeric Keypad Keys or
 drag mouse to edge

Installation Menu
 R-click on building

Change Prod
 Go Offline
 Dismantle

Choose New Installation
 Click selector box arrows
 Click/R-click selector box

Build Installation
 Drag from selector box,
 place on empty grid

Change Colony Name
 Click name, edit, [Enter]

Delete Colony
 Remove all, R-click

Go to Vehicle Manager
 Click Vehicle icon

Go to Colony Manager
 Click Colonies button

PDA



Select Entry
 Click entry, Up/Dn Arrows

Open Library Entry
 Select, click or [Enter]

Select Mode
 [Space] to cycle through
 Log, Library, Status,
 Damage

Leave PDA
 [Esc] or click Power

Select Log
 Select Library

View Status
 View Damage

Scroll Entries
 Up/Dn Arrows

Delete Log Entry
 Select Entry, click Delete

GAME OPTIONS



Save Current Game
 Resume Earlier Game
 Start New Game

Turn Sound On/Off
 Turn Music On/Off
 Speed Up/Down
 Click/R-click Speed

Return to previous screen
 Click Leave



® and ™ indicate
 trademarks of, or licensed
 to, Sierra On-Line, Inc.
 ©1994 Sierra On-Line, Inc.
 All rights reserved.